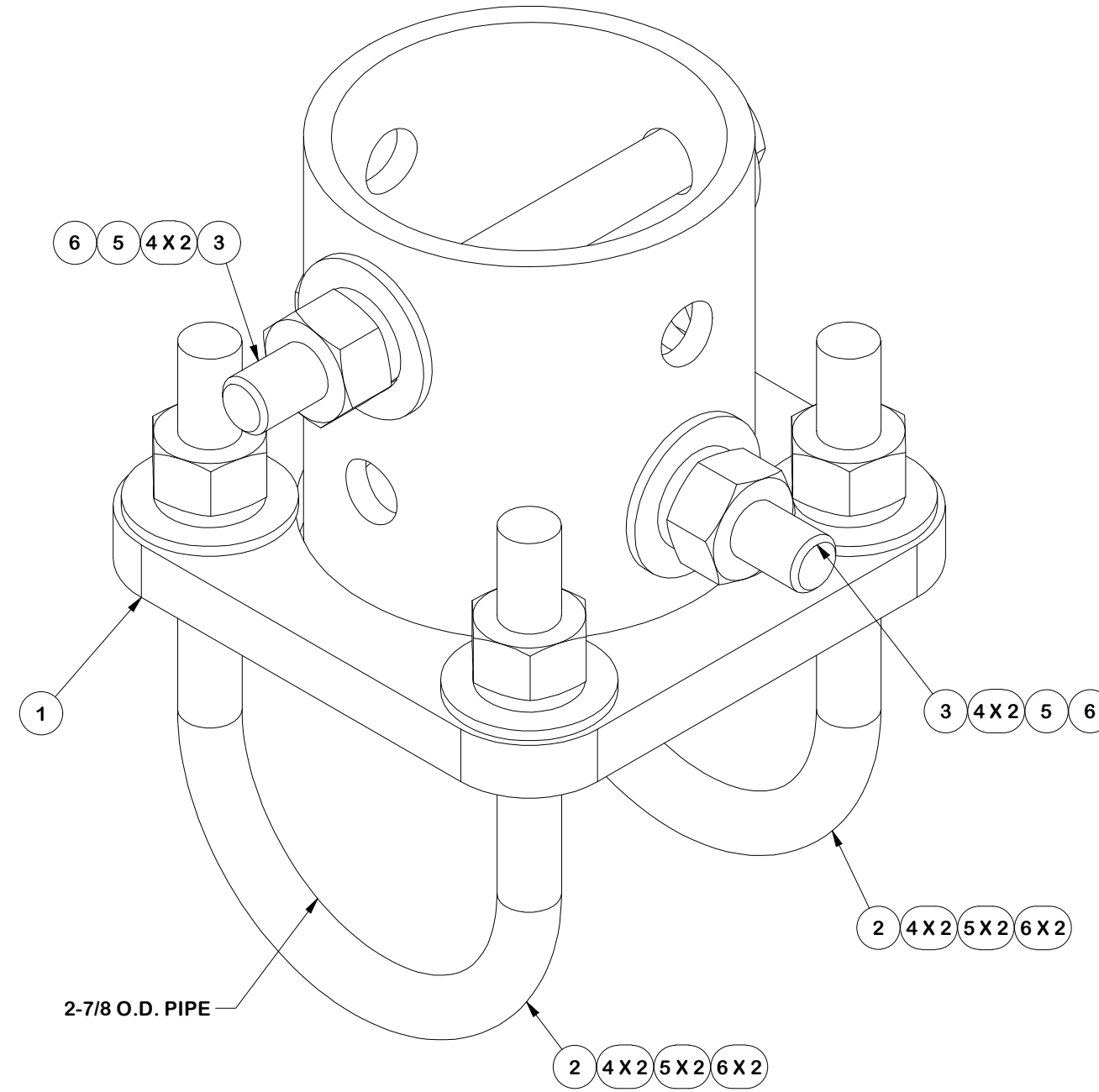


PARTS LIST						
ITEM	QTY	PART NO.	PART DESCRIPTION	LENGTH	UNIT WT.	NET WT.
1	1	X-CSRT-TW	3-1/2" T-WELDMENT		4.93	4.93
2	2	X-UB1300	1/2" X 3" X 5" X 2" GALV U-BOLT		0.74	1.48
3	2	G1205	1/2" x 5" HDG HEX BOLT GR5 FULL THREAD	5 in	0.33	0.65
4	8	G12FW	1/2" HDG USS FLATWASHER	3/32 in	0.03	0.27
5	6	G12LW	1/2" HDG LOCKWASHER	1/8 in	0.01	0.08
6	6	G12NUT	1/2" HDG HEAVY 2H HEX NUT		0.07	0.43
					TOTAL WT. #	7.84



FINISH:
HOT DIP GALVANIZED.

TOLERANCE NOTES

TOLERANCES ON DIMENSIONS, UNLESS OTHERWISE NOTED ARE:
 SAWED, SHEARED AND GAS CUT EDGES ($\pm 0.030"$)
 DRILLED AND GAS CUT HOLES ($\pm 0.030"$) - NO CONING OF HOLES
 LASER CUT EDGES AND HOLES ($\pm 0.010"$) - NO CONING OF HOLES
 BENDS AND ANGLES ARE $\pm 1/2$ DEGREE
 ALL OTHER MACHINING ($\pm 0.030"$)
 ALL OTHER ASSEMBLY ($\pm 0.060"$)

PATENT INFORMATION: WWW.SITEPRO1.COM/PATENTS

PROPRIETARY NOTE:
 THE DATA AND TECHNIQUES CONTAINED IN THIS DRAWING ARE PROPRIETARY INFORMATION OF VALMONT INDUSTRIES AND CONSIDERED A TRADE SECRET. ANY USE OR DISCLOSURE WITHOUT THE CONSENT OF VALMONT INDUSTRIES IS STRICTLY PROHIBITED.

DESCRIPTION
CSRT SINGLE T-WELDMENT KIT

SITE PRO 1
 A valmont COMPANY
 Engineering Support Team:
 sp1engineering@valmont.com

CPD NO. **NCS** DRAWN BY **ADB 12/2/2024** ENG. APPROVAL **12/2/2024**

PART NO. **CSRT-TW1**

CLASS **87** SUB **02** DRAWING USAGE **CUSTOMER** CHECKED BY **CSL 12/2/2024**

DWG. NO. **CSRT-TW1**